
*Statement of Qualifications
and Experience*

Table of Contents

Introduction.	Page 1
Services Provided.	Page 3
Organization Chart.	Page 4
Resumes of Principles and Key Personnel.	Page 5
Sample Listing of Clients.	Page 17

Introduction

ORGANIZATION

CSRA Testing and Engineering Company, Inc., was founded in Augusta, Georgia in 1968. Since that time our company has continuously strived to provide professional testing and engineering services with the highest possible degree of quality assurance.

We provide an extensive range of services, including subsurface investigations, environmental investigations, and selective analytical laboratory analysis. We provide well equipped drilling crews to perform geotechnical and environmental borings. Our construction testing department is highly diversified, providing on-site construction inspections and testing of soils, concrete, asphalt, and aggregates. We also supply concrete or asphalt coring services as well as environmental assessment and underground fuel storage tank studies and monitor well installations.

This company's growth, existence, and reputation is based upon our capability to perform professional tests within the strict, prescribed guidelines of technical associations, and government standards and regulations. Considerable pride and expertise in procedures and manner of conducting technical tests have been the trademark for CSRA Testing and Engineering Company, Inc.

We employ only experienced, qualified, and dedicated personnel. Our capability to perform testing services for both small and large projects in a successful, timely manner is a result of our organized engineering approach. Our intent is to perform quality tests in strict accordance with established procedures and to document, review, and certify all test results.

Over the past ten years, our small company has professionally performed approximately 75,000 various tests for over 900 different clients. This has given us extensive experience in a wide variety of testing services. We are the only American owned testing firm in the Central Savannah River Area offering soil, concrete, asphalt, and physical testing services.

S E R V I C E S P R O V I D E D

SUBSURFACE INVESTIGATIONS

Geotechnical Borings
Environmental Borings
Foundation Recommendations

ON-SITE CONSTRUCTION TESTING

Asphalt
Bolt Tension
Concrete
Soil
Stone Aggregate
Welding

NON-DESTRUCTIVE TESTING

Radiographic
Ultrasonic
Dye Penetrant
Welding Procedure Preparation

ON-SITE CONSTRUCTION INSPECTION

ENVIRONMENTAL ASSESSMENT STUDIES & REPORTS

UNDERGROUND FUEL STORAGE TANK STUDIES

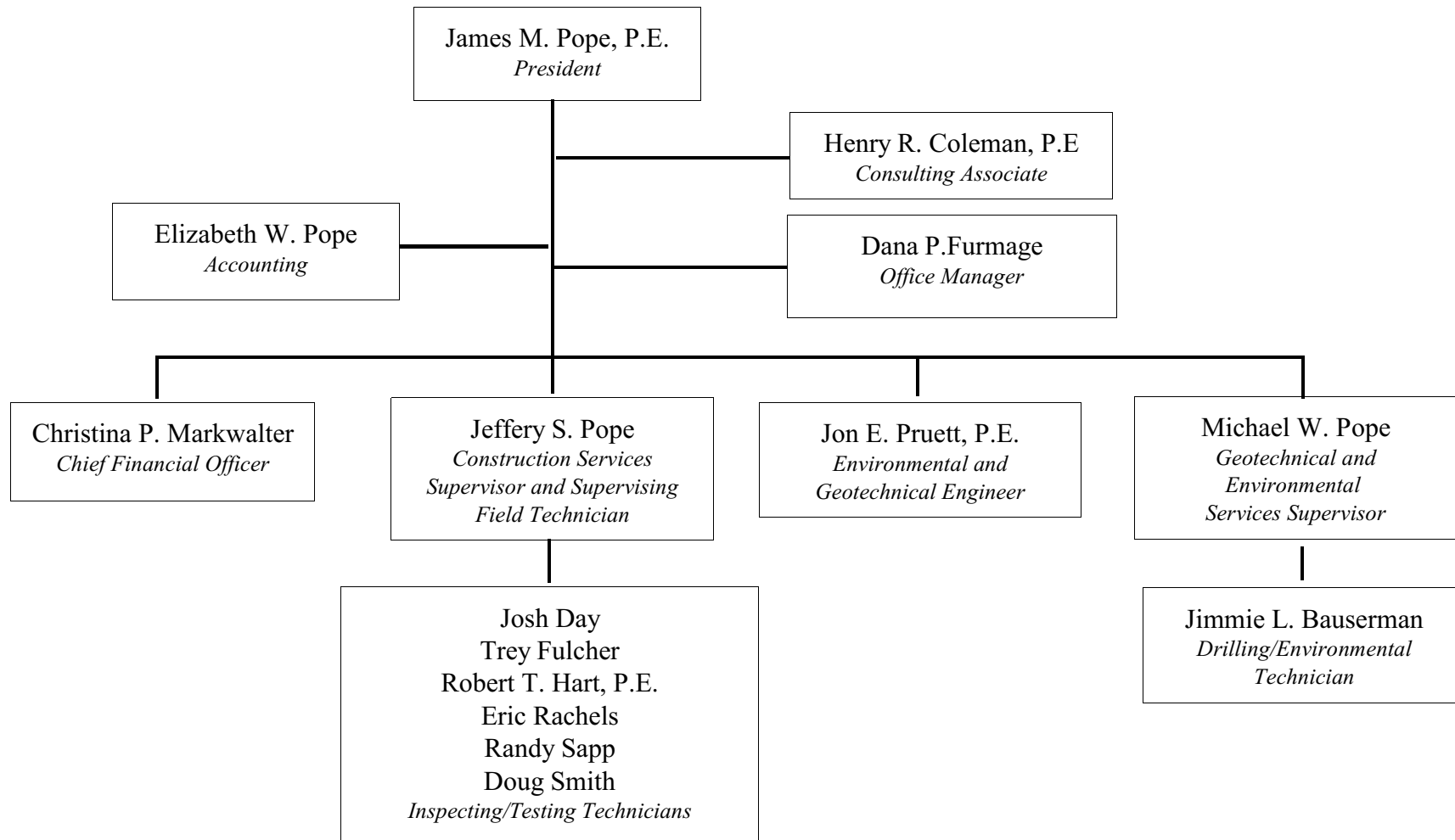
MONITOR WELL INSTALLATION

CONCRETE AND ASPHALT CORING

STORM WATER MONITORING AND SOIL EROSION

Resumes of Principles and Key Personnel

Organization Chart



James M. Pope, P.E.

President and Owner

Education

Bachelor of Civil Engineering (1964), Georgia Institute of Technology, Atlanta, Georgia

Professional and Service Organizations

Chairman - Past Chairman - Richmond County Plumbing Board

Member - Past Member - Aiken County Planning Commission

Past Member - North Augusta Board of Appeals

American Society of Civil Engineering

National Drilling Association

American Society for Testing and Materials

National Groundwater Association

Experience

Principal Professional Engineer and Owner of CSRA Testing and Engineering Company, Inc. for 35 years

Major Categories

Materials testing, subsurface investigations, environmental assessment studies, analytical, testing services, and engineering design services. Directly responsible for testing and engineering tasks performed by associates and employees which include Administrators, Construction Inspectors, Surveyors, Architects, Mechanical Engineers, Structural Engineers, Laboratory Technicians, and Quality Control Technicians Supervisor - Director of all office personnel which include Specification Writers, Bookkeepers, Report Writers, Receptionists, and Secretaries.

Former Employment

Florida Department of Health

Augusta, Georgia Engineering Department

Jones & Fellers, Architects and Engineers, Augusta, Georgia

Years Experience

Fifty

Registrations

Georgia-Professional Engineer (Civil) 6271

South Carolina-Professional Engineer (Civil) 3665

South Carolina-Licensed Well Driller

Henry R. Coleman, P.E.

Project Manager

Education

Bachelor of Civil Engineering (1955)
Clemson University

Experience

Associate Professional Engineer and Project Manager

Major Categories

Twenty years experience as owner and manager of Coleman Testing Laboratories. Directly responsible for inspection and testing of concrete, asphalt, steel, and soil mechanics. Held the position of primary Geotechnical consultant for the VA Hospital project in Augusta, Georgia, and the state capital complex project in Columbia, South Carolina. Provided Geotechnical consultant services for Dravo-Graves Company for construction of the Richard B. Russell Dam. Extensive experience in Environmental Assessments and related services.

Former Employment

Coleman Testing Laboratories

Years Experience

Fifty-five

Registrations

Georgia-Professional Engineer (Civil) 4831
South Carolina-Professional Engineer (Civil) 2457

Michael W. Pope

Engineer

Education

Bachelor of Science in Engineering
University of South Carolina, Columbia, South Carolina
Emphasis on Geotechnical and Environmental Engineering

Major Categories of Experience

Construction Engineering
Construction Management
Geotechnical Engineering
Environmental Engineering

Professional and Service Organizations

Georgia Society of Professional Engineers
Professional Construction Estimators Association

Former Employment

APAC of Georgia, Inc.
Augusta, Georgia

Georgia Department of Agriculture
Augusta, Georgia

Years Experience

Twenty

Registrations

Level IA - Fundamentals of Erosion and Sediment Control

Jeffery S. Pope
Project Coordinator

Education/Training

University of South Carolina
Concentration in Math/Chemistry
Columbia, South Carolina (2 years)

National Institute for Certification in Engineering Technologies Construction-Level III
Subsurface Investigation-Level III, Laboratory-Level III, Generalist-Level III

Concrete Field Testing
Technician, Grade I by the American Concrete Institute

Troxler Training Course for use of Nuclear Testing Equipment

Environmental Analytical Testing Short School
University of Georgia
OSHA Forty-hour Hazardous Waste and Emergency Response Course

North Augusta High School
North Augusta, South Carolina

Major Categories of Experience

Management
Construction Testing
Environmental Assessments

Years Experience

Twenty-four

Registrations

NICET-Engineering Technologies, Construction Level III, Subsurface Investigation Level II & Lab Level III
American Concrete Institute (ACI) Technician Grade I
Troxler Training Course - Nuclear Testing Equipment Certificate
OSHA Forty-Hour Hazardous Waste and Emergency Response Course
International Code Council - Structural Masonry Special Inspector
American Concrete Institute (ACI) - Concrete Construction Special Inspector
GA DOT Roadway Testing Technician

Christina P. Markwalter
Comptroller

Education

North Augusta High School
University of South Carolina
Bachelor of Science in Business Administration - Major in Marketing

Major Categories of Experience

Financial Officer, bookkeeping, insurance, personnel manager, tax reports - Radiological Safety Officer.

Work Experience

Fifteen

Certifications

Humboldt Scientific, Inc.
Nuclear Gauge Training Certification
Radiation Safety Officer Certification

Jonathan E. Pruett, P.E.
Engineer

Education

Bachelor of Civil Engineering
Clemson University
Emphasis on Environmental Engineering and Hydrogeology
Wetlands Delineation Training

Professional and Service Organizations

Member - American Society of Civil Engineers

Experience

Environmental Department Manager, Hydrogeology

Major Categories

Responsibilities include site inspections, use of radiological detection devices, and deed research. Analytical Laboratory Coordinator, supervising all laboratory procedures. Responsible for collection and editing of environmental assessment and underground storage tank study data. Hydrogeology (supervises geological borings, writes boring logs, etc.).

Years Experience

Twenty-one

Certifications

GA Professional Engineer (Civil) - 027602
South Carolina-Professional Engineer (Civil) 20965
Wetlands Delineation Certification for U.S. Army Corps of Engineers Certificate No. 190-3/96
EIT Certificate No. 14774 Certificate Date 6/19/2000
Asbestos Building Inspector Certificate No. 1R27120-02217

Robert T. Hart, P.E.

Engineer

Education

Bachelor of Civil Engineering
University of Maryland (1974)

Experience

Thirty years heavy civil construction, includes subways, lock and dams, bridges and commercial projects and deep piling foundations.

Major Categories of Experience

Deep excavation shoring design, materials testing and inspection services, emphasis on welding inspections including radiography, ultrasonic, etc.

Professional Registrations

Georgia - Professional Engineer - 13522
South Carolina - Professional Engineer - 9754
Florida - Professional Engineer
Maryland - Professional Engineer

Dana P. Furmage
Office Manager

Education

Vocational Office Training
Evans High School
Evans, Georgia

Major Categories of Experience

Plans, prepares and designs all report documents. Oversees office and computer programming procedures. Insurance and workman's compensation administrator. Assists in daily scheduling of secretaries and technicians. Monitors incoming and outgoing data distribution.

Years Experience

Twenty

Jimmie L. Bauserman
Geotechnical Drilling Technician

Education

Butler High School
Augusta, Georgia

Experience

Extensive training and experience in soils, concrete and asphalt construction and test procedures both "on-site" and in the laboratory. Knowledgeable of all applicable ASTM, AASHTO, and Corps of Engineers standards. Responsible for sampling and evaluations of environmental and geotechnical study sites.

Major Categories

Subsurface Exploration, Rock Boring, Monitor Well Installation, and Concrete Coring.

Years Experience

Twenty-one

Training and Certifications

Well Drillers Certification-South Carolina No. 1380
Use of Nuclear Testing Equipment Certification
OSHA Hazardous Waste and Emergency Response
ACI Concrete Field Testing Certification
NICET - Level I, Geotechnical Engineering Technology - Exploration
NICET - Level I, Geotechnical Engineering Technology - Construction
NICET - Level I, Geotechnical Engineering Technology - Generalist

Trey Fulcher

Inspector

Education

Hephzibah High School
Hephzibah, Georgia

Experience

Quality Control Inspector/Technician

Extensive training and experience passing written and oral examinations in soils, concrete and asphalt construction and test procedures both “on-site” and in the laboratory. Knowledgeable of applicable ASTM, AASHTO, and Corps of Engineers standards. Special inspections.

Years Experience

Five

Training and Experience

Use of Nuclear Testing Equipment Certification
OSHA Hazardous Waste and Emergency Response
International Code Council - Soils Special Inspector

Doug Smith

Inspector

Education

Augusta Technical College
Augusta, Georgia

Hephzibah High School
Hephzibah, Georgia

Experience

Quality Control Inspector/Technician

Extensive training and experience passing written and oral examinations in soils, concrete and asphalt construction and test procedures both “on-site” and in the laboratory. Knowledgeable of applicable ASTM, AASHTO, and Corps of Engineers standards. Special Inspections.

Years Experience

Fifteen

Training and Experience

Use of Nuclear Testing and Equipment Certification
OSHA Hazardous Waste and Emergency Response
Level IA - Fundamentals of Erosion and Sediment Control
International Code Council - Soils Special Inspector
SCDOT - Asphalt Roadway Technician

Eric Rachels

Inspector

Education

Augusta State University 2004-2006
Augusta, Georgia

Augusta Technical College 2001-2002
Augusta, Georgia

Greenbriar High School
Evans, Georgia

Experience

Quality Control Inspector/Technician

Extensive training and experience in soils, concrete and asphalt construction and test procedures both “on-site” and in the laboratory. Knowledgeable of applicable ASTM, AASHTO, and Corps of Engineers standards.

Years Experience

Four

Training and Experience

Use of Nuclear Testing and Equipment Certification
OSHA Hazardous Waste and Emergency Response
Level IA - Fundamentals of Erosion and Sediment Control
(ACI) Concrete Field Testing Technician-Grade I
(SRS) Consolidated Annual Training (2011)
(ICC) Structural Masonry Special Inspector
(ICC) Soils Special Inspector
(ACI) Concrete Construction Special Inspector

Randy Sapp
Erosion Control Specialist

Education

Spartanburg Methodist College
Spartanburg, South Carolina

North Augusta High School
North Augusta, South Carolina

Experience

Quality Control Inspector/Technician

Extensive training and experience in soils, concrete and asphalt construction and test procedures both “on-site” and in the laboratory. Knowledgeable of applicable ASTM, AASHTO, and Corps of Engineers standards.

Years Experience

Eight

Training and Experience

Use of Nuclear Testing Equipment Certification
OSHA Hazardous Waste and Emergency Response
GA Stormwater Conservation Commission Certificate #0000001515

Sample Listing of Clients

SAMPLE LISTING OF CLIENTS OF

CSRA Testing and Engineering Company, Inc.

GOVERNMENTAL AGENCIES

Federal

Department of Energy
Federal Aviation Administration
Federal Housing Authority-Farmers Home Administration
HQ Army and Airforce Exchange Service
Small Business Administration
U.S. Army Corps of Engineers
U.S. Department of Veterans Affairs
U.S. Fish and Wildlife Service
Veterans Administration

State

Georgia Department of Education
Georgia Department of Industry and Trade
Georgia Department of Labor
Georgia Department of Natural Resources
Georgia Department of Transportation
Georgia Gam and Fish Commission
Georgia Medical Research Foundation
Georgia Rehabilitation Institute
Georgia State Finance and Investment Commission
Medical College of Georgia
South Carolina Department of Parks

Local

Aiken, South Carolina
Aiken County Public Works Department
Augusta, Georgia
Augusta Housing Authority
Beech Island, South Carolina
Ben Hill County, Georgia
Burke County, Georgia
Bush Field Municipal Airport
City of Jackson, South Carolina
Columbia County Board of Education
Columbia County, Georgia
Daniel Field Municipal Airport
Edgefield County, South Carolina

Local (Con't)

Edgefield County School Board
Evans, Georgia
Fitzgerald, Georgia
Green County, Georgia
Lexington County Board of Education
Lincolnton, Georgia
McDuffie County, Georgia
North Augusta, South Carolina
Richmond County Board of Education
Richmond County, Georgia
St. Joseph Hospital
Thomson, Georgia
University Hospital
Williston School District

ARCHITECTS - ENGINEERS

John Brown, Architect
James Buckley and Associates
J.R. Chasman and Associates
Cheatham, Fletcher, Scott and Sears, AIA
Cranston, Robertson and Whitehurst, PC
Davis and Floyd Engineers
Nicholas Dickinson and Associates
Ebasco Environmental
Eckles, Martin and Rule, AIA
Hass-Hilderbrand and Associates
Holroyd, King and Associates, PC
Hughes/Beattie and Associates
Metcalf and Eddy Engineers
Nix-Mann Architects
Patchen, Mingledorff and Associates
E.L. Perry, Architect
Sandeford - Webb, Architects
Fred Sigg, Architect
Simons-Eastern Consultants, Inc.
Southern Partners
Stevens and Wilkinson, Inc.
James G. Swift and Associates
Tribble and Richardson, Inc.
Ben G. Turnipseed Engineers
Wells, Law and Associates
Whitaker Laboratory, Inc.
Wiedman and Singleton Engineers
Woodhurst Partnership, Architects
Zimmerman, Evans, and Leopold

MISCELLANEOUS

American Medicorps, Inc.
Atlanta Gas and Light Company
Augusta Mall, Inc. (The Rouse Company)
Augusta Country Club
Augusta National Golf Course
Banker's First
Blanchard and Calhoun
Boardman Oil Company
Cameron Brown Company
Caper House, Inc.
Champion Oil Company
Coca Cola Company
The Crom Corporation
CSX Railroad
Firestone
Global Van Lines
Goody's
Goodyear
The Huddle House
Hydrico
Industrial Rubber and Safety Company
Koger-Walters Oil Company
Krispy Kreme Company
Long John Silver, Inc.
Marathon Oil Company
McDonald Corporation
Oglethorpe Power Corporation
Orkin Exterminating Company
Pizza Hut, Inc.
Regency Mall
Republic Parking Company
The Rouse Company
Shoney's Big Boy
Southern Natural Gas Company
Syntek Corporation
Union '76
Waffle House, Inc.
Wal-Mart
Wells Oil Company
Wendy's
Western Sizzlin' Steak House
Wyatt Development Company

CONTRACTORS

A.L. Adams Construction Company
R.W. Allen Construction Company
APAC-Georgia, Inc.
BCB Company
Bowen and Watson Construction Company
Bradsfield and Gorie, Inc.
Brown Steel Contractors, Inc.
R.D. Brown Construction Company
Carolina Cranes, Inc.
CESP, Inc.
Curry Contracting Company
Flournoy Construction Company
Fluor Daniel Company
Gregory Bridge Company
R.J. Griffin Company
Perry M. Hartley Company
M.B. Kahn Construction Company
A.J. Kellos Construction Company
Knox-Rivers Construction Company
Kuhlke Construction Company
Litchfield Company
Mabus Brothers Construction Company
The Marley Cooling Tower Company
McCrary Construction Company
McKnight Construction Company
Metric Construction Company
Meybohm and Associates
Mobley Construction Company
Norsouth Construction Company
Olen Construction Company
Republic Contracting Company
H.G. Reynolds Company
Richmond Paving Company
Satterfield Construction Company
Scott's Grading and Paving Company
Shellhouse Construction Company
Sheriff Construction Company
J.C. Stockton and Son, Inc.
Nello L. Teer Company
Two State Construction Company
Vercon Construction
R.B. Wright Construction Company